

BURDEN OF MUSCULOSKELETAL DISORDERS in Latvia

Daiga Behmane
Fit for Work Latvia
project leader

**”Healthcare Solutions to Improve Workability”
April 29, 2015**

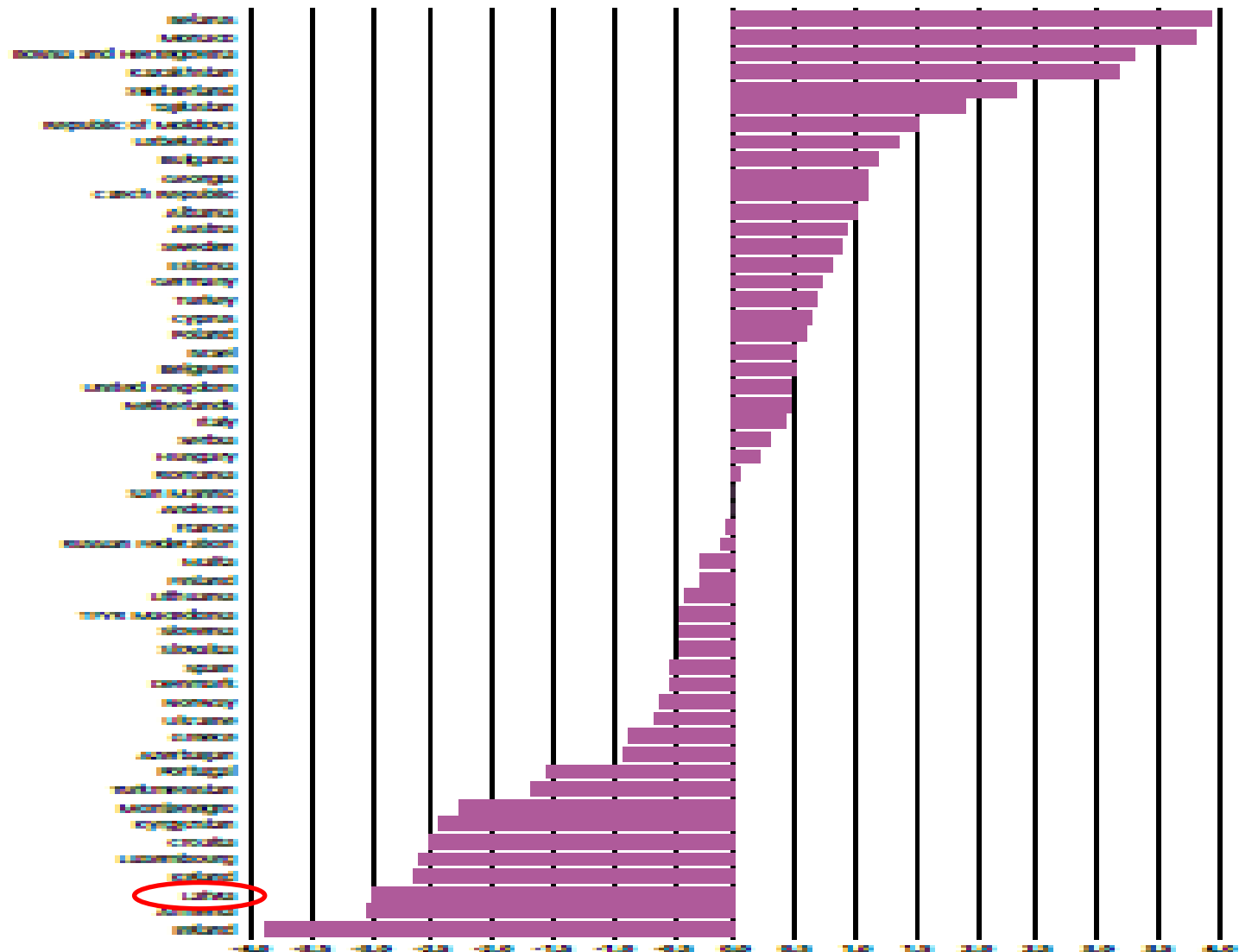
Conference center “Citadele”
Republikas laukums 2A, Riga, Latvia

Outline of the presentation



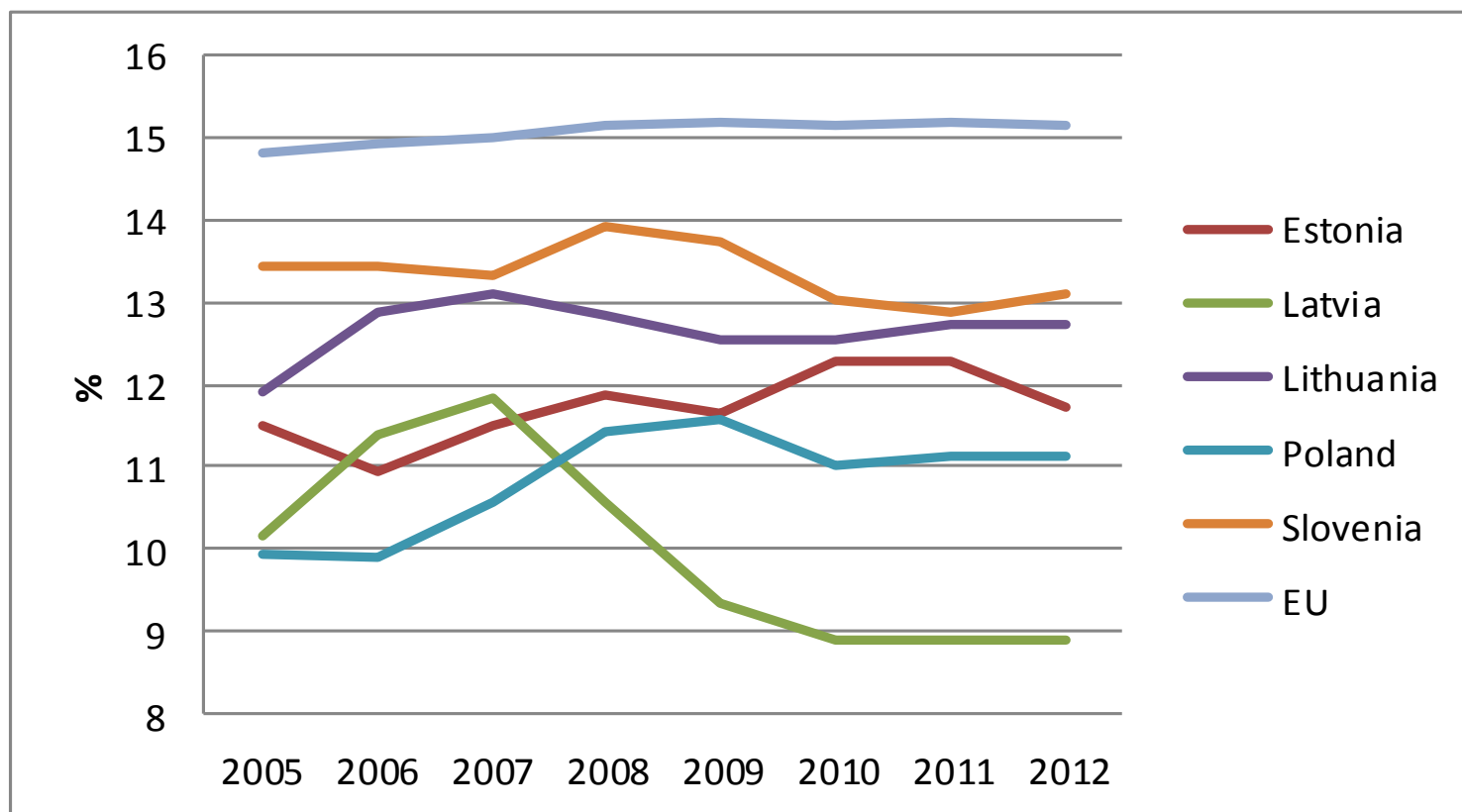
- Impact of economic crises on the health care system in Latvia
- Burden of MSDs in Latvia
- Priorities and recommendations of the *Fit for Work Latvia* coalition

Changes in public health care spending during economic crisis, %, European region, 2007-2011



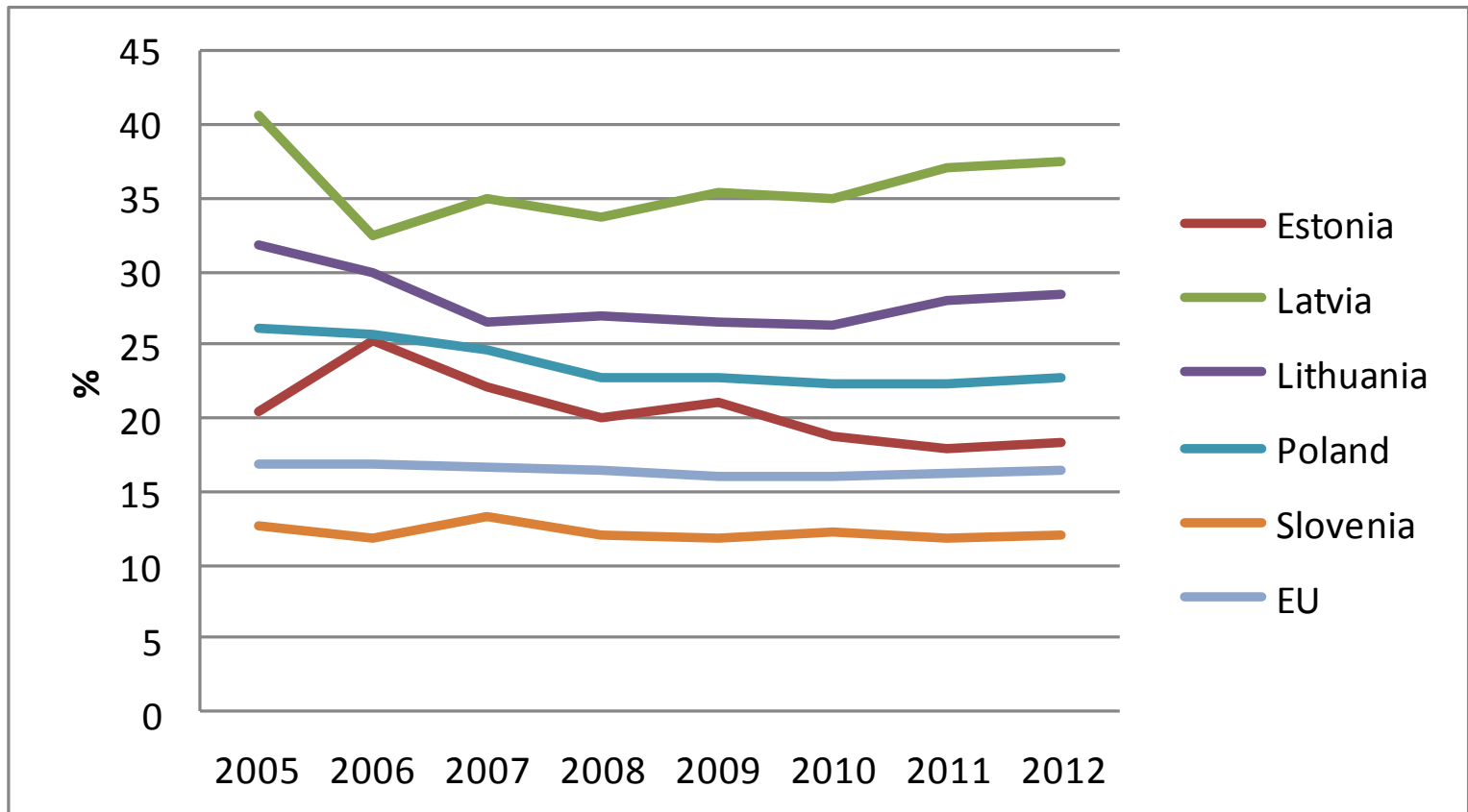
Public health care expenditure in Latvia

dropped from 12 % to 9% from total government expenditure
(10% decrease in health service tariffs, 20% in salaries, restructuring of HC services, ...)

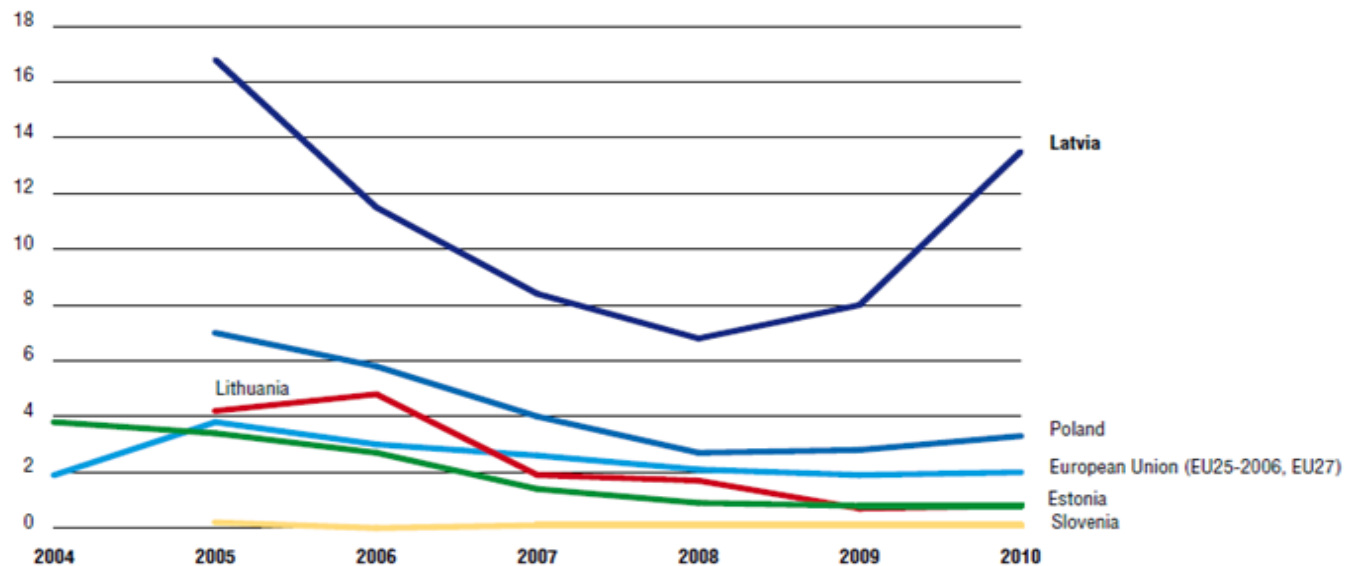


Source: WHO Regional Office for Europe, 2014

Private expenditure in total health care expenditure, %

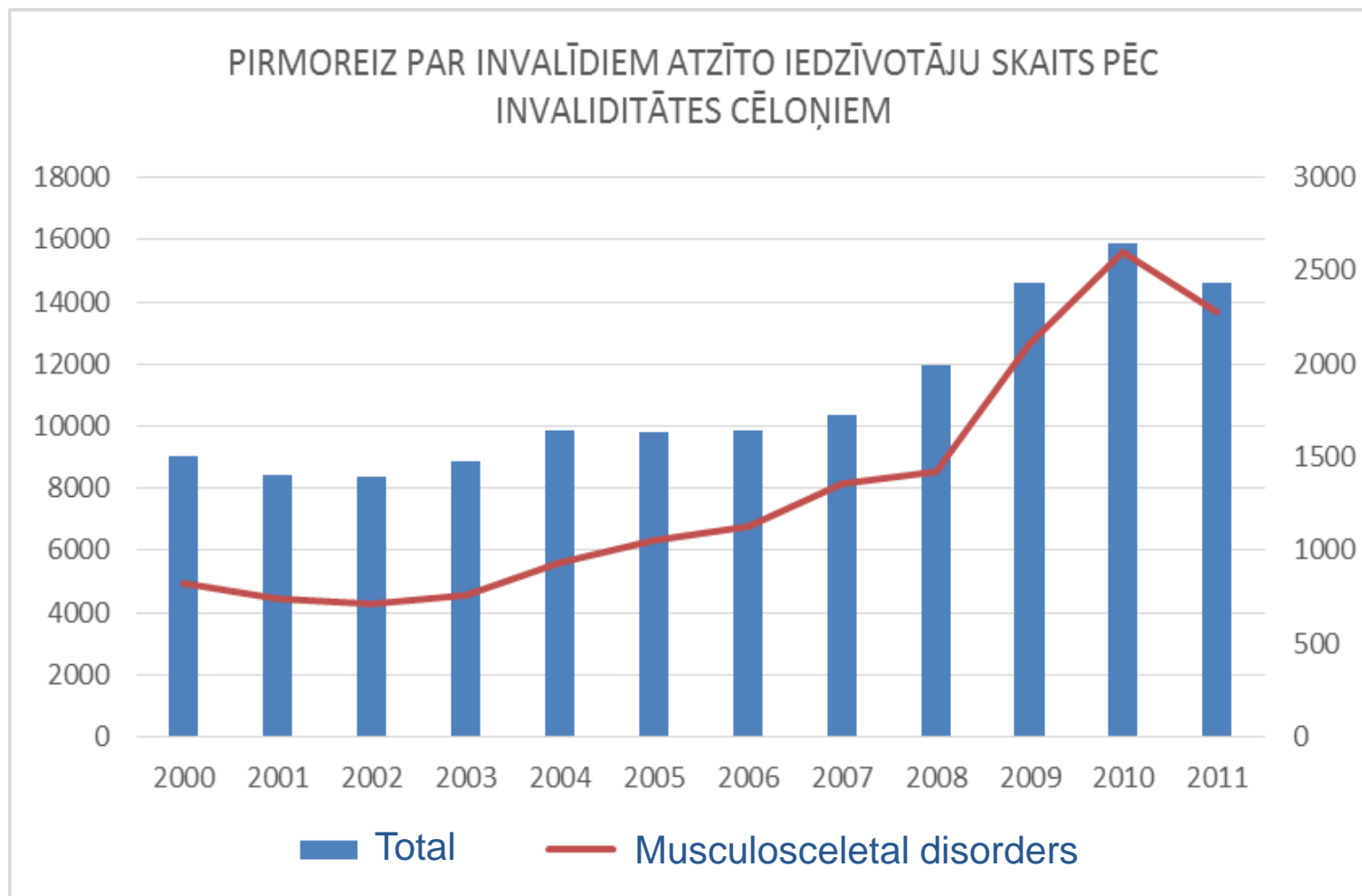


Percentage of self-reported unmet need for medical examination or treatment because it was “too expensive”, Latvia and selected comparators, 2004-2010



Source: Mitenbergs et.al.2012

Incidence of disability, 2000 - 2011, Latvia

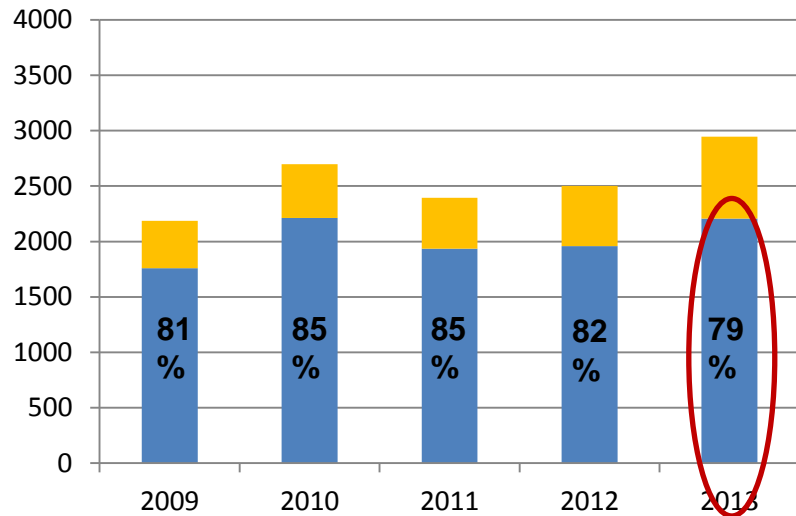


Source: CSB data

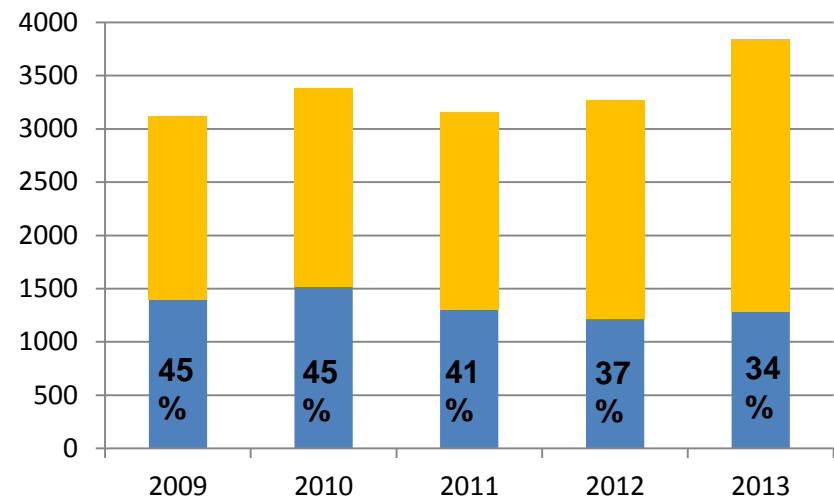
Causes of primary disability, Latvia 2009-2013

MSDs – leading cause in working age group

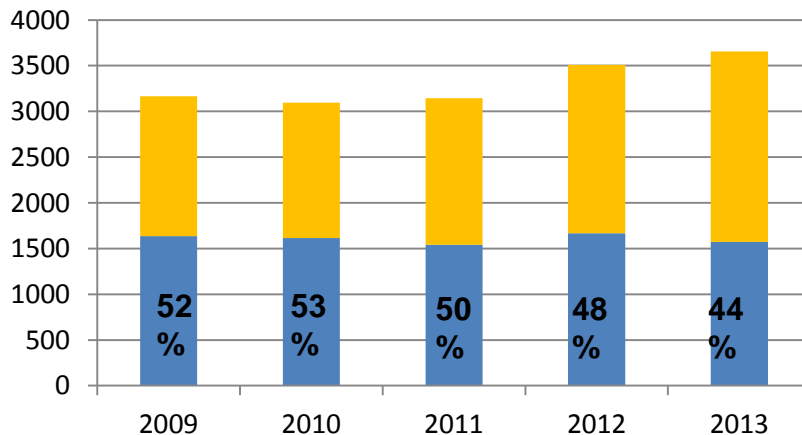
MUSCULOSKELETAL DISORDERS





CARDIOVASCULAR DISEASES



ONCOLOGY



 Persons > 60 years of age .

 Persons, working age < 60 years of age

FFW LV launch event 2012, Fit for Work Latvia Coalition: politicians, doctors, patients, employers, HC managers



Fit for Work LV project structure

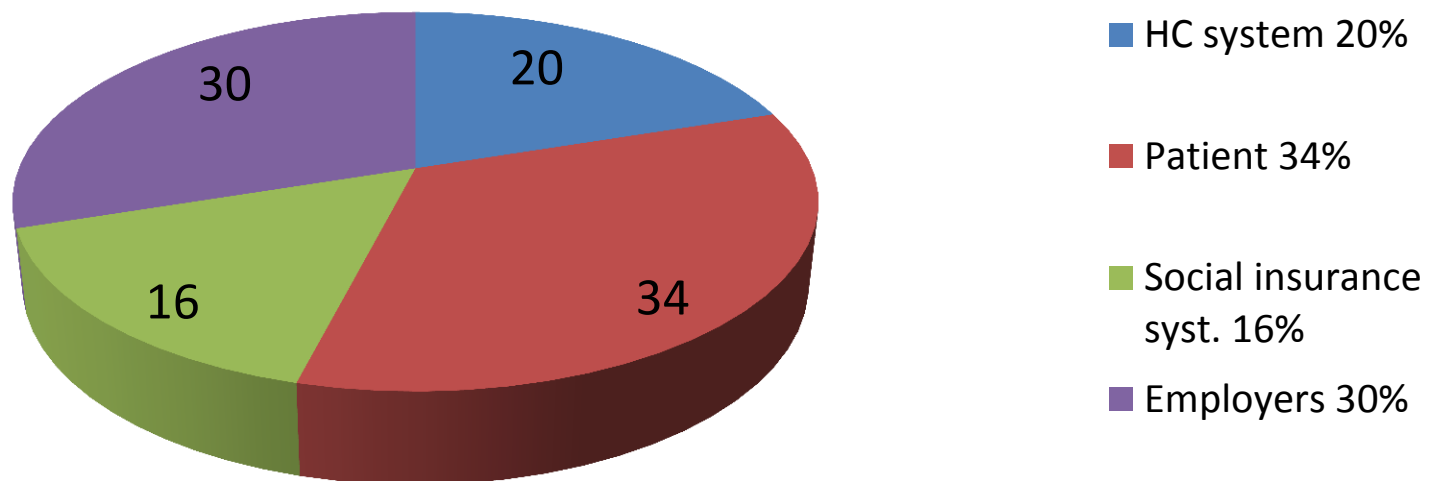


Economic burden of Musculoskeletal disorders in Latvia

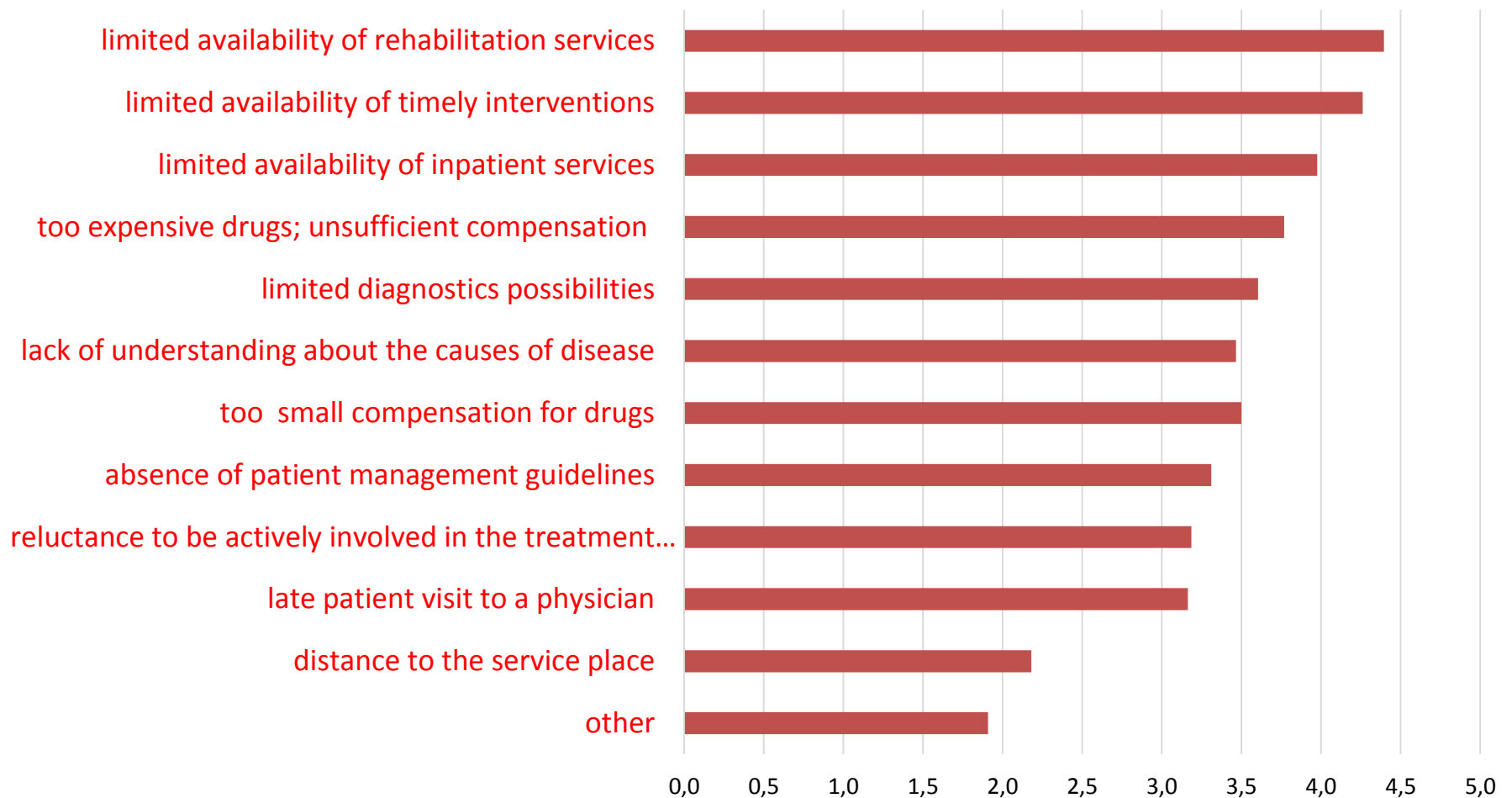
Cost of illness analysis, 2013

Societal perspective: direct and indirect costs for patients, health system, employers and social insurance system

MSDs account for more than 150 million EUR per year



Reasons for delayed treatment, Survey of Primary Care doctors, Riga Municipality, 2013



priorities and recommendations to mitigate the burden of MSDs include:

- To underline **the importance of MSDs in public health and health care** strategies among other chronic diseases
- To make **Early Intervention** (prevention, diagnosis, treatment and care) and **return to work** a priority of social and health policies
- To develop **Integrated diagnostics, care and rehabilitation program and health service package** for patients with MSDs
- To develop patient oriented **self-care services** and providing **better information** to patients
- To use **international platforms** such as ***Fit for Work Europe*** for best practice information, experience exchange and setting common strategic goals to help patients with chronic conditions

Thank you!



Daiga Behmane

Ministry of Health, Latvia

Daiga.Behmane@vm.gov.lv

www.vm.gov.lv

Fit for Work Coalition Latvia

info@fitforwork-latvia.lv

Riga Stradins University

Daiga.Behmane@rsu.lv

www.rsu.lv